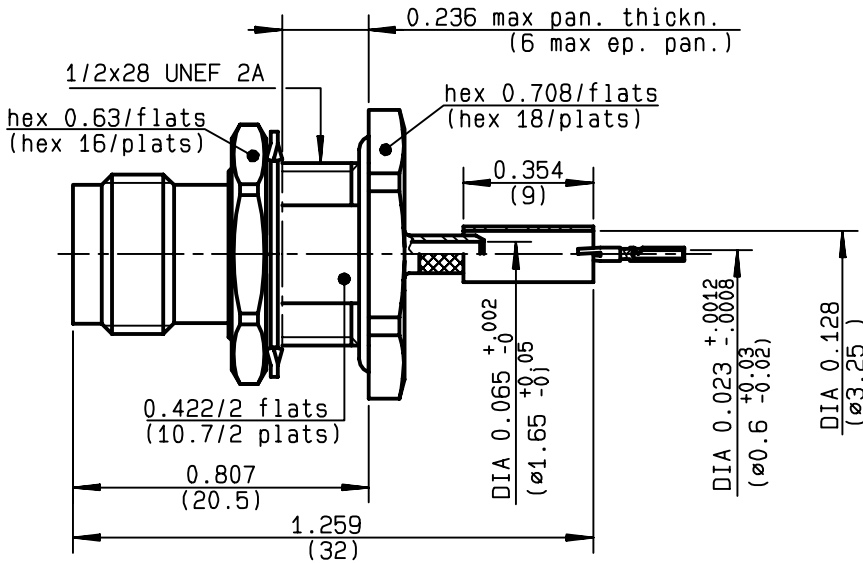


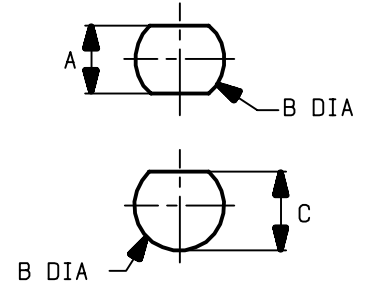
STRAIGHT BULKHEAD JACK PANEL SEAL
REAR MOUNT CRIMP TYPE - CABLE 2.6/50 S

R143.331.520
SERIES TNC



PERÇAGE PANNEAU

MOUNTING HOLE



	MM		INCH	
	min	max	min	max
A	10.8	10.9	.425	.429
B	12.7	12.8	.5	.503
C	12	12.1	.472	.476

NOMINAL IMPEDANCE	50	Ω
FREQUENCY RANGE	0-11	GHz
TEMPERATURE RATING	-65/+165	$^{\circ}C$
V.S.W.R	1.30 +	0 x F(GHz)Maxi
RF INSERTION LOSS	0.06	\sqrt{F} (GHz) dB Maxi
VOLTAGE RATING	335	Veff Maxi
DIELECTRIC WITHSTANDING VOLTAGE	1000	Veff Mini
INSULATION RESISTANCE	5000	M Ω Mini
HERMETIC SEAL	NA	Atm.cm ³ /s
LEAKAGE (pressurized only)	NA	
MECHANICAL DURABILITY	500	Cycles
WEIGHT	18.1	gr
SPECIFICATION		

CABLES : **KX 22A**
RG 188
RG 316

OTHERS CHARACTERISTICS

CABLE RETENTION	40	N Mini
CENTER CONTACT RETENTION		
Axial force - mating end	27	N Mini
Axial force - opposite end	27	N Mini
Torque	NA	cm.N Mini
RECOMMENDED TORQUES		
Mating	NA	cm.N
Panel nut	370	cm.N
Clamp nut	NA	cm.N

CONNECTOR PARTS	MATERIALS	FINISH	(all values are given in micrometers)
BODY	BRASS	NICKEL 2	
OUTER CONTACT			
CENTER CONTACT	BERYLLIUM COPPER	GOLD 1.3 OVER COPPER 1.3	
INSULATOR	PTFE	-	
GASKET	SILICONE RUBBER	-	
OTHERS PIECES	BRASS	NICKEL 2	

ISSUE	CREATION DATE	FILE PART-NUMBER
9845B01	09/09/1992	92-0400-209



Connect to the future

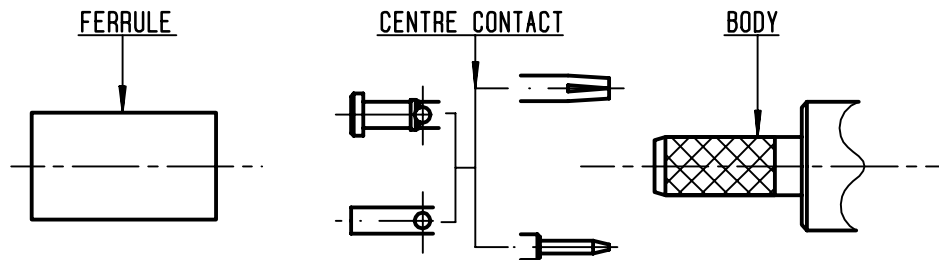
The information given here is subject to change without notice.
 Design changes may be in order to improve the product.

LELEU



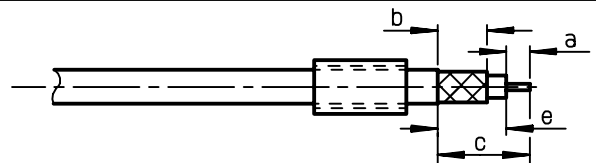
R143.331.520

ISSUE **9845B01** SERIES **TNC**



①

Slide onto the cable the ferrule
Strip the cable .
-
-

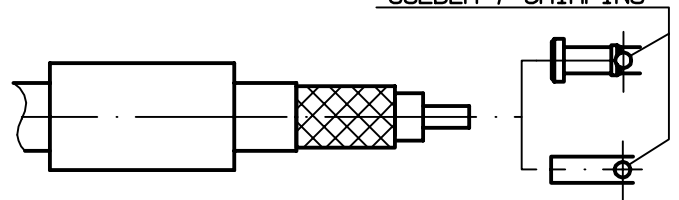


Stripping	a	b	c	d	e
inch	0.118	0.236	0.453	0	0.335
mm	3	6	11.5		8.5

②

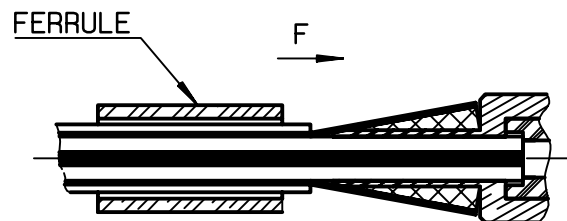
Slide on centre contact until it bottoms against cable dielectrique .
Solder the centre contact .
-
-
-
-
-

SOLDER / CRIMPING



③

Fan the braid .
Slide cable into the body until bottoms against insulator .
Slide ferrule over the braid .
(In direction F)



④

Crimp the ferrule with crimping tool R 282 271 000 (Hex. : .128) or crimping tool R282 293 000 (M22520/5-01) + dies R282 235 003 (M22520/5-03)
Cut the excess of braid .
-
-
-
-

